

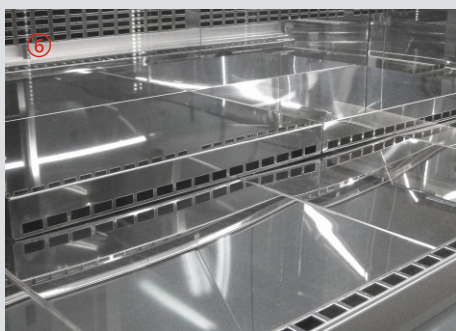
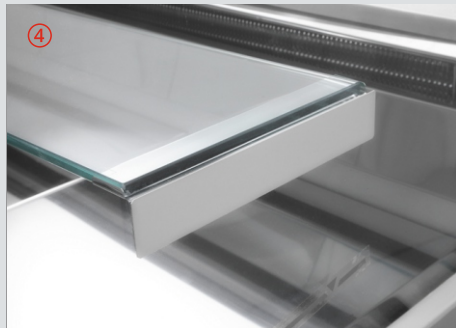
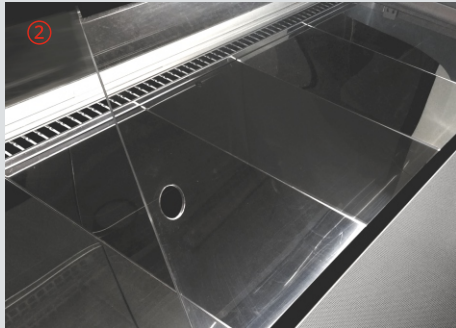
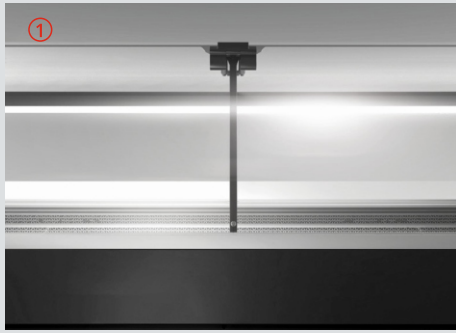
# REFRIGERATED COUNTERS WITH FLAT GLASS PANE



[www.rapa.pl/en](http://www.rapa.pl/en)

RAPA sp. j.  
9 Ceramiczna Street  
20-149 Lublin, Poland

+48 81 718 46 51  
[rapa@rapa.lublin.pl](mailto:rapa@rapa.lublin.pl)



## STANDARD EQUIPMENT

### Refrigerating unit

- 3rd climatic class
- Plug-in unit powered with ecological R-290 refrigerant
- Fan assisted cooling – X, Xi, F/NZ model
- Gravitational cooling – F, F Max, F/NW, A, A1, A2, A3 model
- Electronic temperature controller with display
- Access to a condenser that does not require tools
- Independend glass panes drainage system – X, Xi, X/NW, Xi/NW model
- Condensate drain into the container – F, F Max, F/NW, F/NZ, A, A1, A2, A3 model
- Automatic condensate evaporation system – X, Xi, X/NW, Xi/NW model

### Exposition

- Internal top made of stainless steel equipped with soft bumpers– F, F Max, F/NW, F/NZ, A, A1, A2, A3 model
- Internal top made of painted stainless steel – X, X/NW model
- External top made of glass – F, F Max, F/NW, F/NZ, A, A1, A2, A3 model
- Divided bottom of the exposition made of "mirror" stainless steel
- Electronic thermometer on the customer side
- LED lighting adapted for goods
- Glass panes opening system on the lift-up gas springs – X model
- Front glass pane divided, flat, opened up – X model
- Front glass pane flat, permanently fixed – X/NW model
- Front glass pane flat, tilted – F, F Max model
- Front glass pane flat, short – Xi, Xi/NW model
- Front glass pane divided, straight, oblique – A, A1, A2, A3 model
- All panes made of tempered glass ①
- Night covers ②

### Storage

- Non-threshold storage bottom made of stainless steel
- Door of storage in the same colour as housing with magnetic gasket
- Uncooled space under the storage, next to the aggregate – F, A, A1, A2, A3 model
- Perforated platforms for EURO 2 containers – F Max model
- Perforated platform on whole surface of storage bottom regulating air circulation – X, Xi model
- Storage allows to store:
  - X, Xi model – from 4 pcs. up to 8 pcs. of Euro 2 containers
  - F Max model – 6 pcs. of Euro 2 containers

## ADDITIONAL EQUIPMENT

- Worktop made of: granite, "linen" stainless steel, grinded stainless steel, laminated board
- Set of 4 pcs. of rotary wheels (2 with brake)\*
- Housing made of stainless steel
- Painting of housing in RAL colour from the RAPA colour chart
- Painting of housing in individual of RAL colour
- Legs masking
- Sloping bottom of the exposition area
- Front shelf for customer - railing
- Shelf under the storage, next to aggregate (non-refrigerated)
- Shelf in the exposition area made of tempered glass (non-refrigerated) ④
- Exposure partition made of tempered glass - permanently fixed ⑤
- Storage partition permanently fixed
- Automatic condensate evaporation system
- Glass panes drainage system
- Set of 2 sides with side glass panes - required in series lines
- Device without aggregate
- Front made of furniture board - contact the Customer Service

\* not applicable to modules joined in series lines

### Housing

- Sides made of ABS in inoXframe design – X, Xi, X/NW, Xi/NW model
- Decorative sides made of HIPS in the colour from the RAPA colour chart, filled with ecological polyurethane foam – F, F Max, F/NW, F/NZ model
- Plain sides made of silver-metallic HIPS, filled with ecological polyurethane foam – A3 model
- Sides made of HIPS in the colour of front finish – A1, A2 model
- Sides made of grey laminated board – A model
- Coloured finish of the device front – A, A1, A2, A3 model
- Housing painted in RAL 9005 Jet black colour semi mat – X, Xi, X/NW, Xi/NW model
- Housing painted in one of the colours chosen from the RAPA colour chart – F, F Max, A2, A3 model
- Housing painted in RAL 9003 Signal white colour – A, A1 model
- Legs masking in the colour of housing – F, F Max, F/NW, F/NZ, A2 model
- Legs masking in RAL 7004 Signal grey colour – A3 model
- Possibility to connect in longer series lines – X, Xi, F, F Max model
- Adjustable legs
- Front panels made of powder-painted steel or furniture board – X, Xi, X/NW, Xi/NW model
- Backlighting, coloured bottom plafond of the device, HIPS colours to be chosen from the RAPA colour chart – F, F Max, F/NW, F/NZ, A2, A3 model
- Double electric socket from the service side on the right side of the device ③
- Front finish with silver-metallic bumpers of soft PVC – F, F Max, F/NW, F/NZ model
- Front finish with grey bumpers of soft PVC – A, A1, A2, A3 model
- Front finish in 2 versions:
  - with bumpers
  - without bumpersg
- X, Xi, X/NW, Xi/NW models

### Worktop

- Worktop made of grey laminated board – A model
- Worktop made of grinded stainless steel – X, Xi, X/NW, Xi/NW, A1, A2, A3 model
- Worktop made of "linen" stainless steel – F, F max, F/NW, F/NZ model

- Support for glass shelf in exposition area of series lines
- Evaporator protected with a preservative coating
- Order and moutage of double electric socket
- Order counter without double electric socket
- Change the side of double electric socket moutage - left side of the device

## ACCESSORIES

- Cutting board
- Pollen filter
- Cascade made of stainless steel "mirror" pattern ⑥
- Platform on worktop for cashbox or scale made of grinded staines steel
- Platform for top containers in storage
- Front shelf for customer - railing\*\*
- Exposure partition made of transparent PET or PMMA - movable
- Exposure partition made of tempered glass - movable
- USB temperature recorder

\*\* not applicable to internal corner models



REFRIGERATED COUNTERS WITH FLAT GLASS PANE

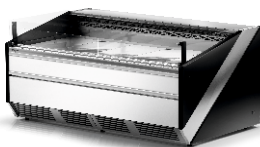
COLOUR



X model



Xi model

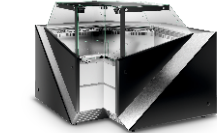


X/NW model



Xi/NW model

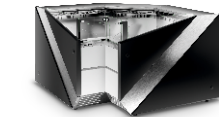
front	
housing	
sides	



F model



back of the F model

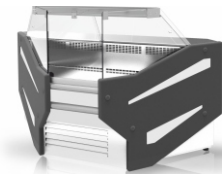


F Max model



back of the F Max model

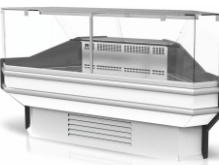
housing and legs masking	
sides	



F/NW model



F/NZ model



housing and legs masking	
sides	

REFRIGERATED COUNTERS WITH STRAIGHT, OBLIQUE GLASS PANE



A model



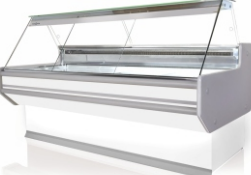
A1 model



A2 model



A3 model



housing	
front	
sides	
sides A1	

housing	
front	
sides A2	
sides A3	
legs masking A2	
legs masking A3	



The "RAPA" company reserves the right to make changes in the characteristics and appearance of manufactured devices. The information provided in this folder is not binding and does not constitute an offer within the meaning of the Civil Code.